

Unit 1 How can I get there?

PEP 六年级上册

Part A

建议2个课时完成



课时 2

Let's learn & Make a map and talk

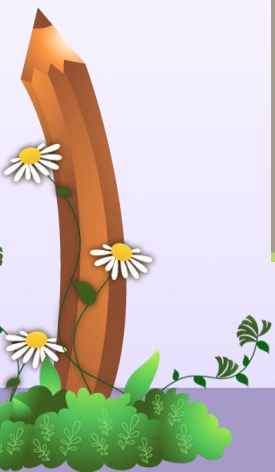


Let's learn



Where is the cinema?

It's next to the bookstore.



知识讲解



讲解来自《点拨》



知识点 1 有关地点的单词[四会]

重点

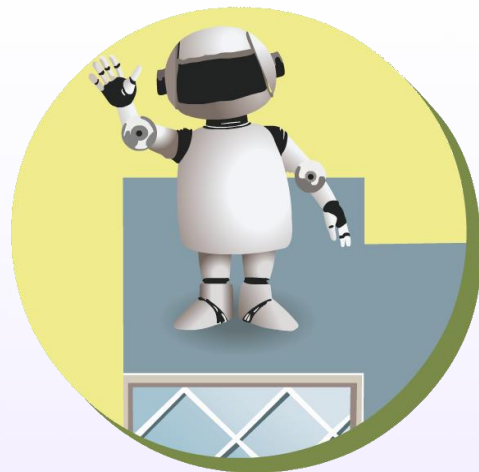
science museum 科学博物馆

science/'saɪəns/ *n.* 科学

例句: We like science.

我们喜欢科学。

 **考向** 短语: science and technology 科学技术



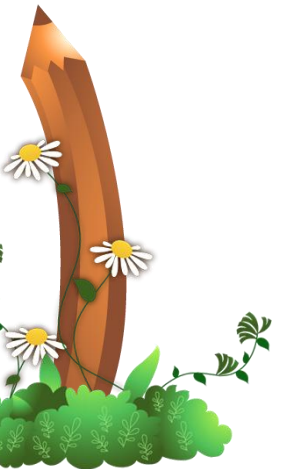
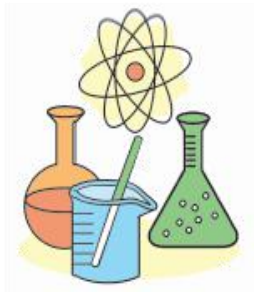
知识讲解

讲解来自《点拨》

★ 拓展 词形变化: scientist 科学家

🌱 典例 根据图片写单词。

We have art and science lessons today.



知识讲解



讲解来自《点拨》

museum /mju'zi:əm/ n. 博物馆

例句： This is a new museum.

这是一个新博物馆。



考向

短语： a museum of modern art

现代艺术博物馆




知识讲解



讲解来自《点拨》

 **魔法记忆：** se挑着u(油)，两个m守两头。

 **典例** 根据首字母提示写单词。

There is a big museum in my city. I can watch many old things there.



知识讲解



讲解来自《点拨》

post office/'pəʊst, ɒfɪs/n. 邮局

例句：Where is the post office?

邮局在哪儿？



★ **拓展** 联想记忆：postman邮递员

postbox邮箱 postcard明信片



知识讲解



讲解来自《点拨》

 **典例** 选择与句子相符的图片。

(**B**) There is a new post office in my city.



A



B



C



知识讲解



讲解来自《点拨》


bookstore /'bʊkstɔ:(r)/ *n.* 书店

例句: I want to go to the bookstore.

我想去书店。



 **考向** 同义词: bookshop 书店

 **拓展** shoe store 鞋店 clothes store 服装店



知识讲解



讲解来自《点拨》

加法记忆法：

把一个已经认识的单词和另外一个或几个字母或单词合成为一个生词来记忆的方法。如：

book(书) + store(商店) = bookstore(书店)

school(学校) + bag(包) = schoolbag(书包)

bed(床) + room(房间) = bedroom (卧室)

class(班级) + room(房间) = classroom (教室)

post(邮寄) + man(男人) = postman(邮递员)

post(邮寄) + box(盒子) = postbox(邮箱)



知识讲解



讲解来自《点拨》



典例

选一选。

I want to buy a book. I should go to the

 C .

A. museum

B. Library

C. bookstore



知识讲解



讲解来自《点拨》

cinema /'sɪnəmə/ *n.* 电影院

例句: There is a cinema near the park.

公园附近有一个电影院。



★ 拓展 短语: go to the cinema 去看电影

联想记忆: film/movie 电影



知识讲解



讲解来自《点拨》

hospital /'hɒspɪtl/ *n.* 医院

例句：She works in a hospital.

她在一家医院工作。



★ 拓展 短语：pet hospital 宠物医院

联想记忆：doctor 医生 nurse 护士



知识讲解



讲解来自《点拨》

辨析记忆法：

in hospital



生病住院

in a/the hospital



在医院里



Pairwork



同桌两人结对练习对话。

A: Where is the science museum?

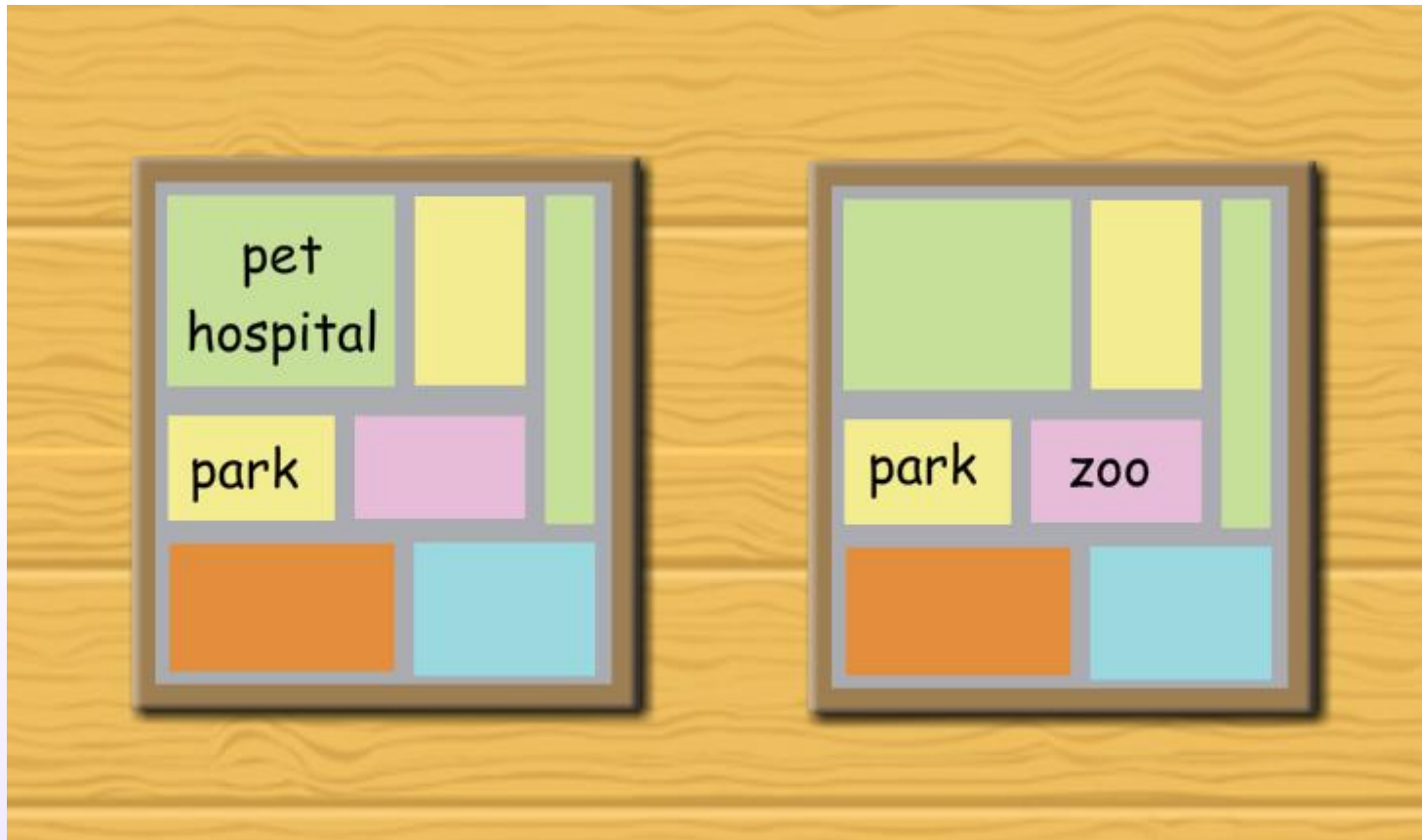
B: It's next to the post office.

A: Where is the bookstore?

B: It's behind the cinema.



Make a map and talk



Pairwork



看下面的自制地图，运用句型：

“Where is...?” “It’s+方位介词(短语)”。

pet hospital		science museum
park	cinema	
post office		bookstore



eg: A: There is a pet hospital in my city.

B: Where is it?

A: It's near the park.



当堂检测



习题来自《点拨》

一、根据句意写单词。

1. I like films. So I often go to the cinema.

2. My sister is a nurse. She works in a hospital.

点拨： nurse 护士在医院工作，故应填hospital。



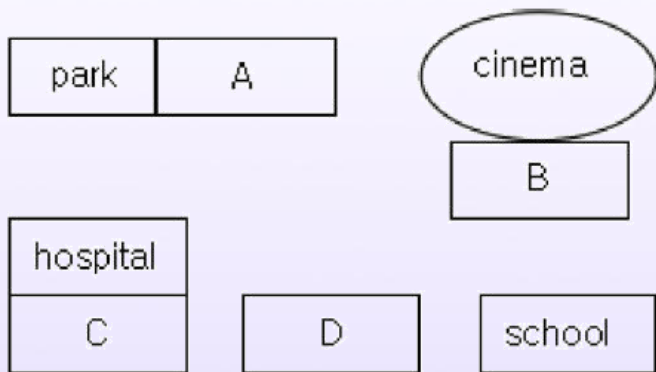
当堂检测



习题来自《点拨》

二、阅读短文，在横线上写出相应地点。

Look! This is a map of my city. The park is next to the science museum. The post office is behind the cinema. The cinema is round(圆形的) and large(大的). And the hospital is in front of the park. Look at the new bookstore. It's near our school.



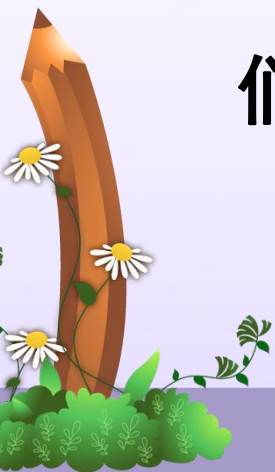
- A. science museum B. post office
C. park D. bookstore



课堂小结



本节课我们学习了 **science museum,**
bookstore, cinema, hospital 等有关地点的词
汇，请同学们一定加强巩固，以便能和同学
们进行灵活交流哦！



课后作业



- 1 熟记本节课所学的单词，必须达到会听、说、读、写。



THANK YOU!



Unit 1 How can I get there?

PEP 六年级上册

Part A



课时 2

Let's learn & Make a map and talk



课后作业



习题源于《典中点》

一、火眼金睛选不同。

(C) 1. A. hospital B. museum C. robot

(A) 2. A. send B. zoo C. park

(B) 3. A. what B. wow C. where

(B) 4. A. buy B. postcard C. ask

(A) 5. A. great B. near C. behind

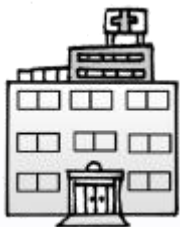


课后作业

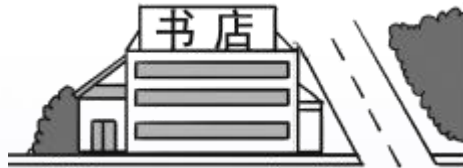


习题源于《典中点》

二、根据图片写单词或词组。



1. hospital



2. bookstore



3. post office



4. cinema



5. science museum



课后作业



习题源于《典中点》

三、选择合适的句子补全对话。

A: 1. B , is there a post office?

B: Yes, there is. 2. D

A: Is it far?

B: 3. A You can go there on foot.

A: Thank you.

B: 4. C

A. No, it isn't.

B. Excuse me

C. You're welcome.

D. It's next to the cinema.

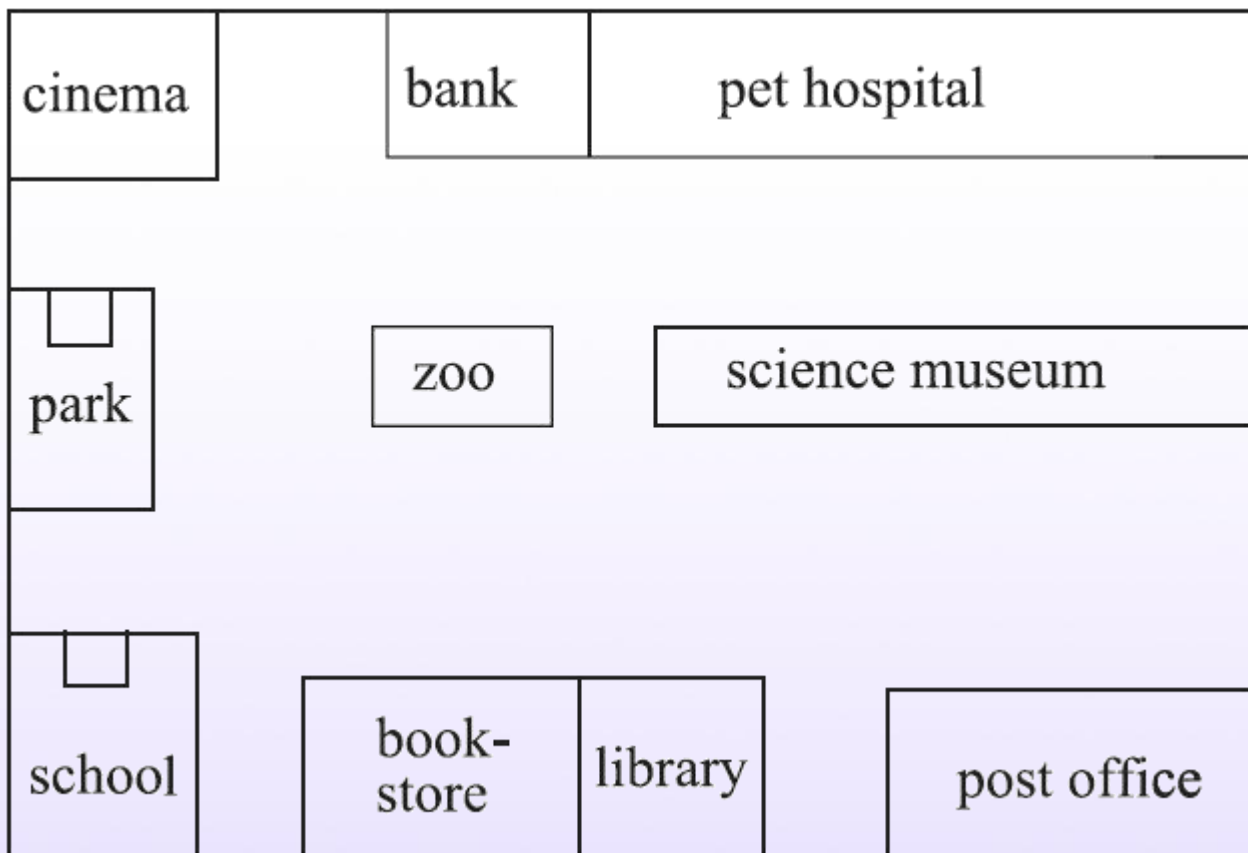


课后作业



习题源于《典中点》

四、阅读理解。



课后作业



习题源于《典中点》

(一)根据图片，选择正确的答案。

(C) 1. Where is the pet hospital?

A. It's behind the park.

B. It's in front of the post office.

C. It's next to the bank.

(A) 2. Is there a science museum in the city?

A. Yes, there is. B. No, there isn't.

C. We don't know.



课后作业



习题源于《典中点》

(二)根据图片填空，每空一词。

3. The school is behind the park.

4. The library is next to the bookstore.



THANK YOU!

